



# Reducing Cost Of Energy: Strategies & Solutions

***Sharat Chandra***

***President & COO – New Technologies***

***GTL Limited***

$$E = MC^2$$



**Energy**



**Shelter**



**D.G.**



**SMPS**



**BTS**



**Battery Bank**



**A.C.**



**[Creativity]<sup>2</sup>**

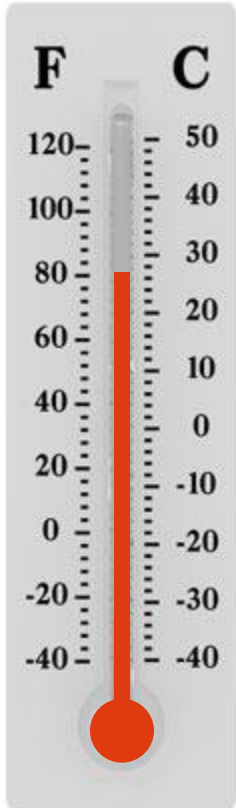
**Machines**



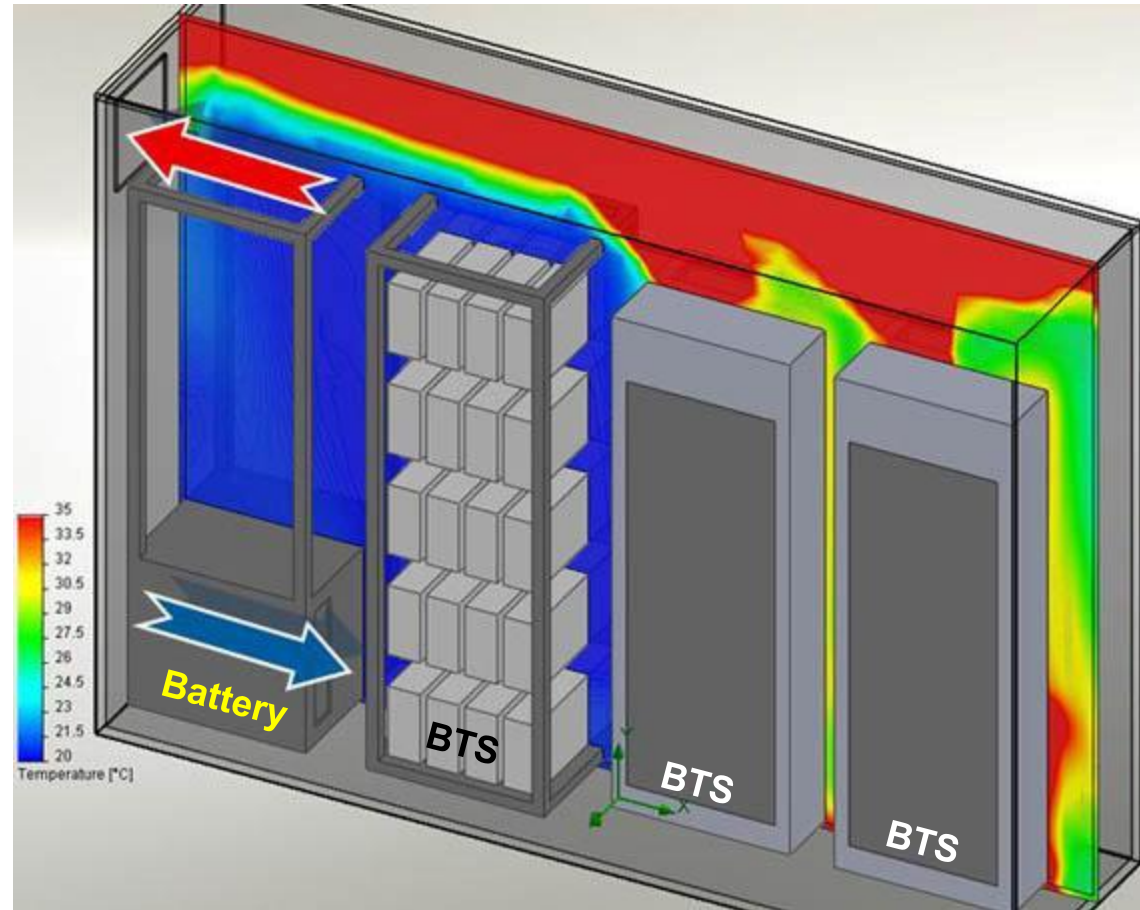
# The Hot Topic

*It is about Heat Management*

*not necessarily air conditioning*



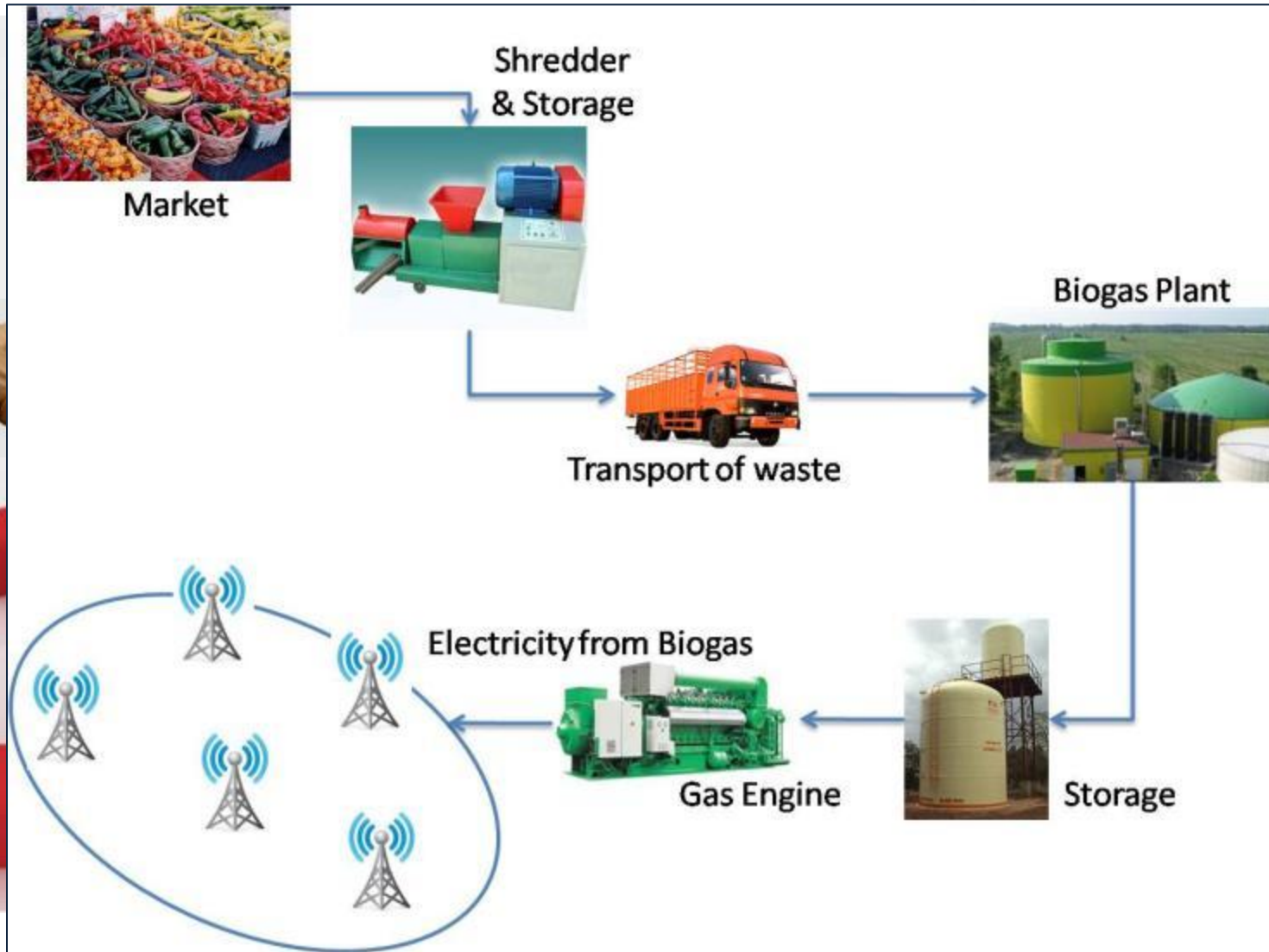
**29° C ± 2**



**Battery is more Temperature sensitive; BTS not**  
BTS can work in the “outdoor” mode very well

# Mission

# SHARING



Gas Plants)

structure

y & usage



# Conversion Loss is a waste

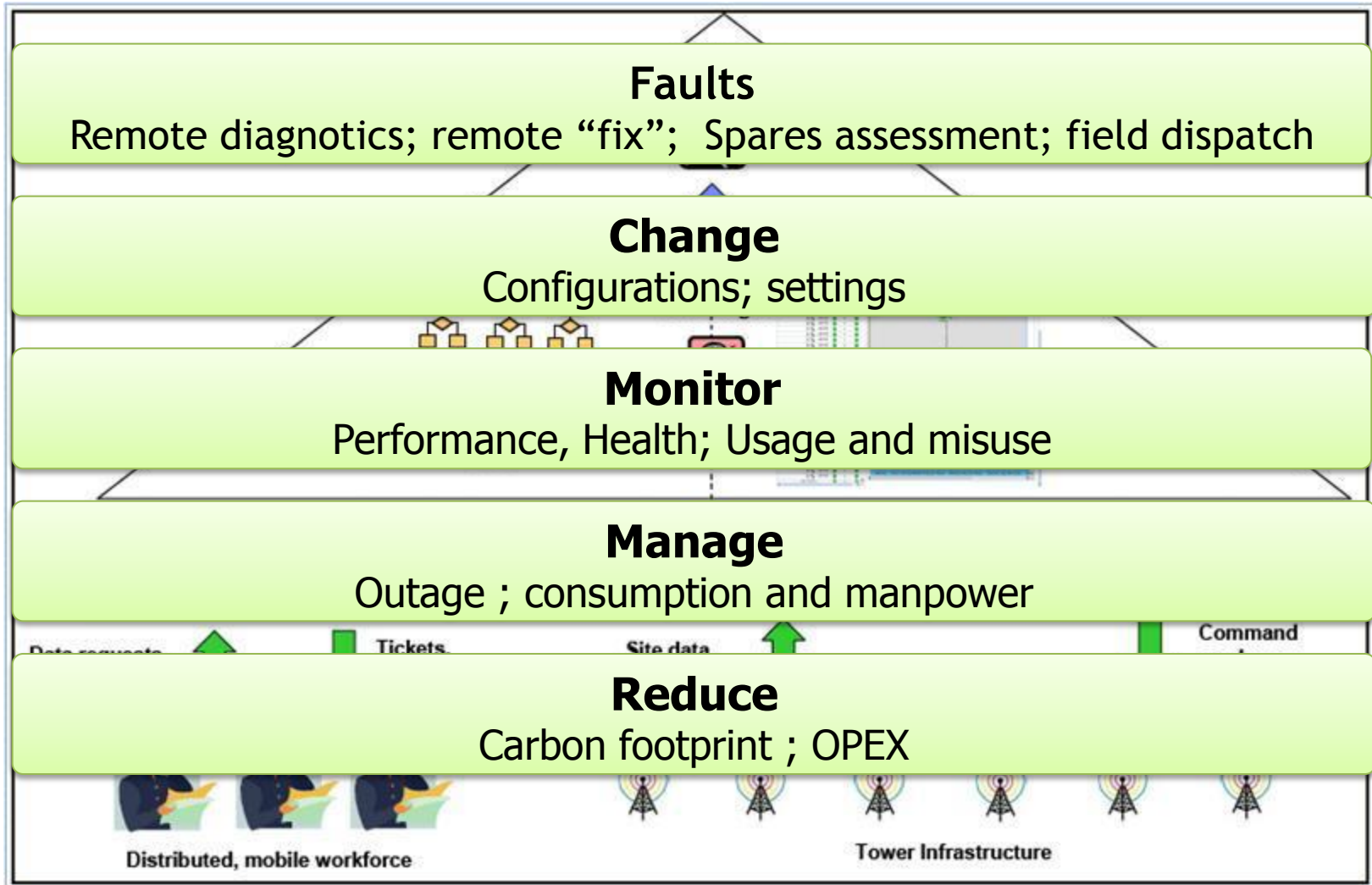


*Harness  
in-extinguishable sources  
even when conventional  
ones are available*



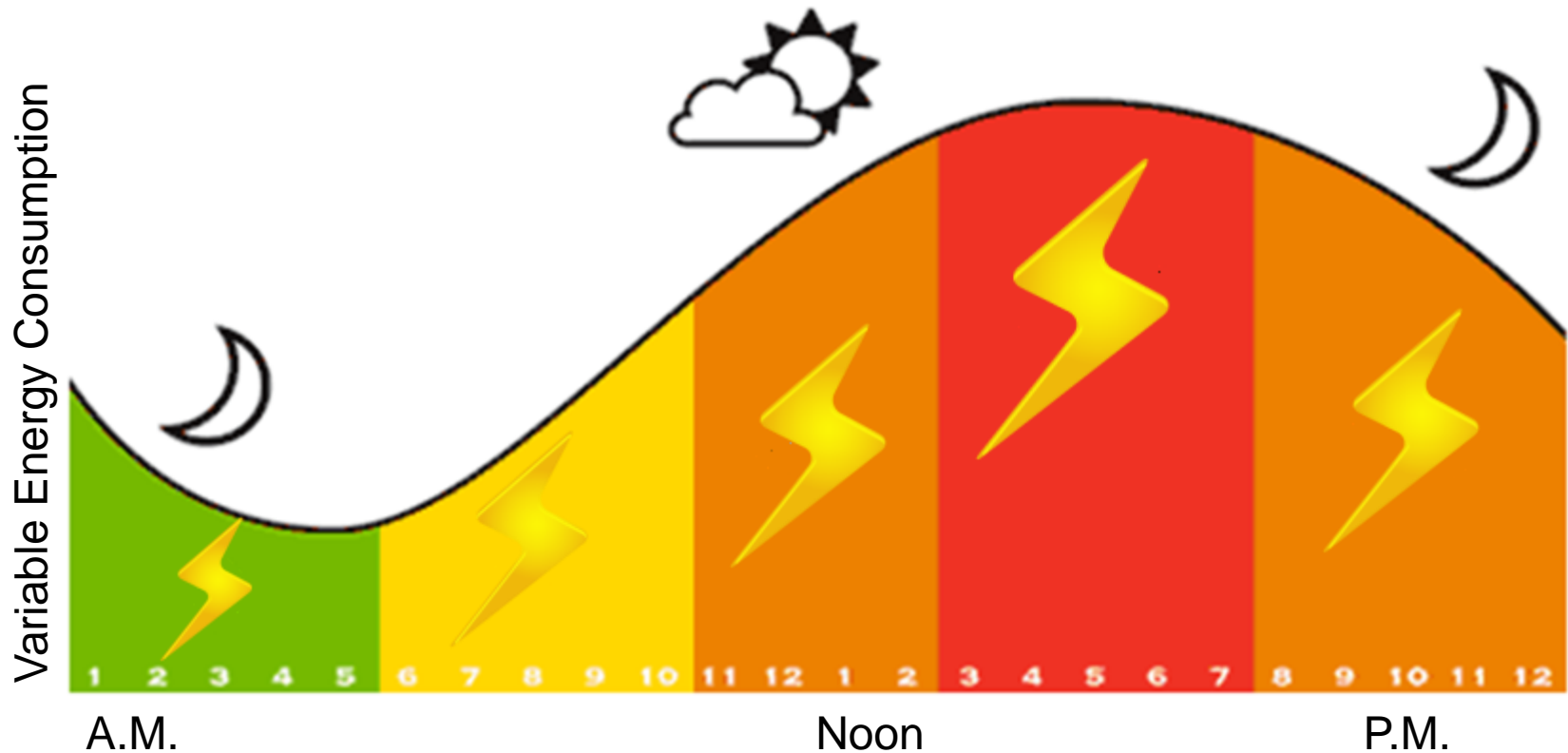
**Use most Cost effective energy source available to serve  
the load - DG the last resort**

# What's going on out there !!



# Change with the *Times*

- ❖ *Energy need of equipments change through the day*
- ❖ *Logic to use the best source for the most critical time*



# It's Man that makes the difference

*Training on Products and Technologies*

*Energy Audit Certification*

*O&M practices*

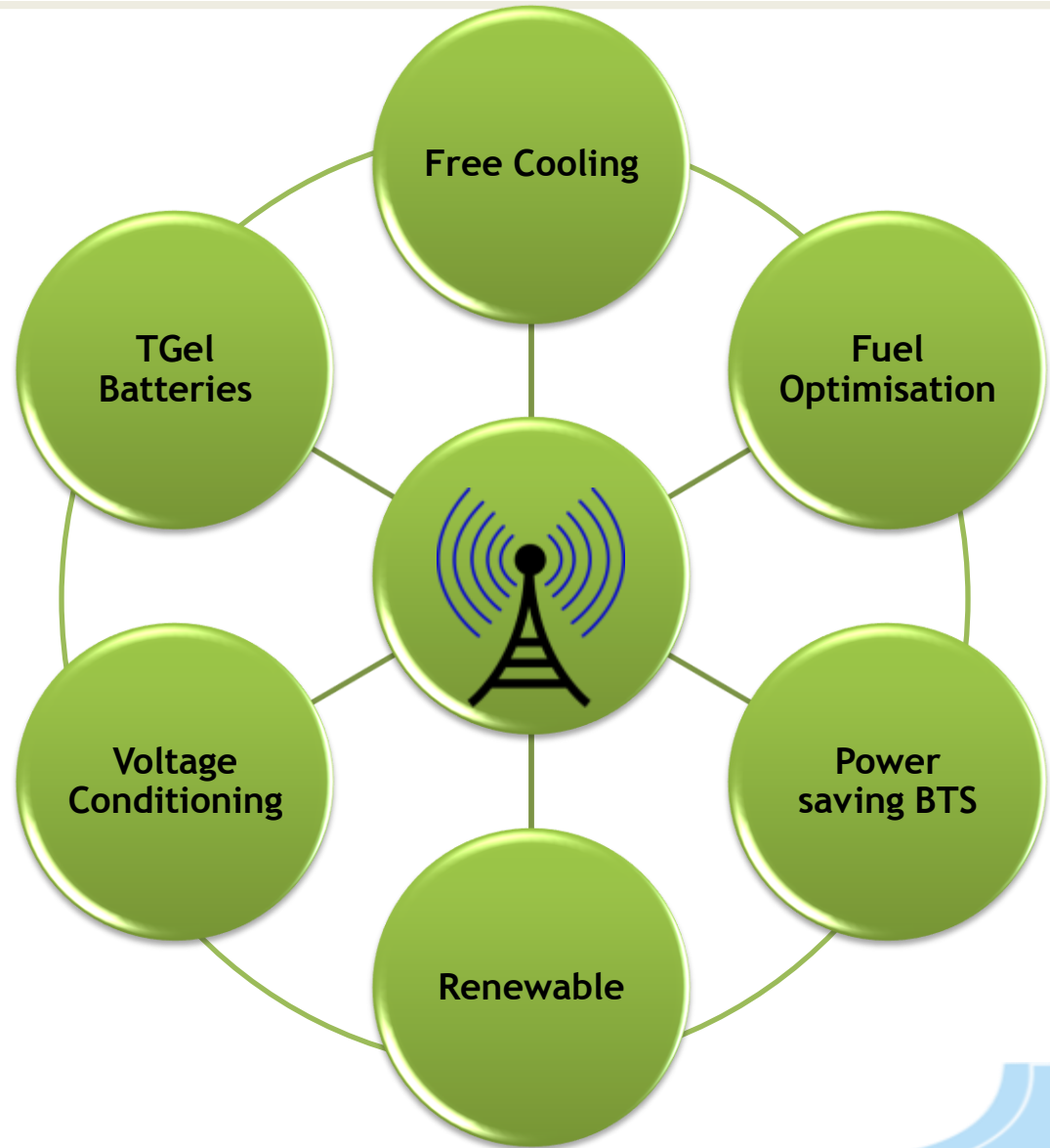




# Energy Saving at telecom tower

Deploy an engineered energy solution, not just individual products

Analyse cumulative effect of energy saving equipments on each other as well as on active & passive loads



# Energy Solution Must Haves

## *Not only reduce consumption - sustain & improve delta*

- Energy saving device is not a magic box
- New energy devices must be supported by upgrade of related ancillary equipments
- Devices must work in tandem for the solution to improve the resultant vector

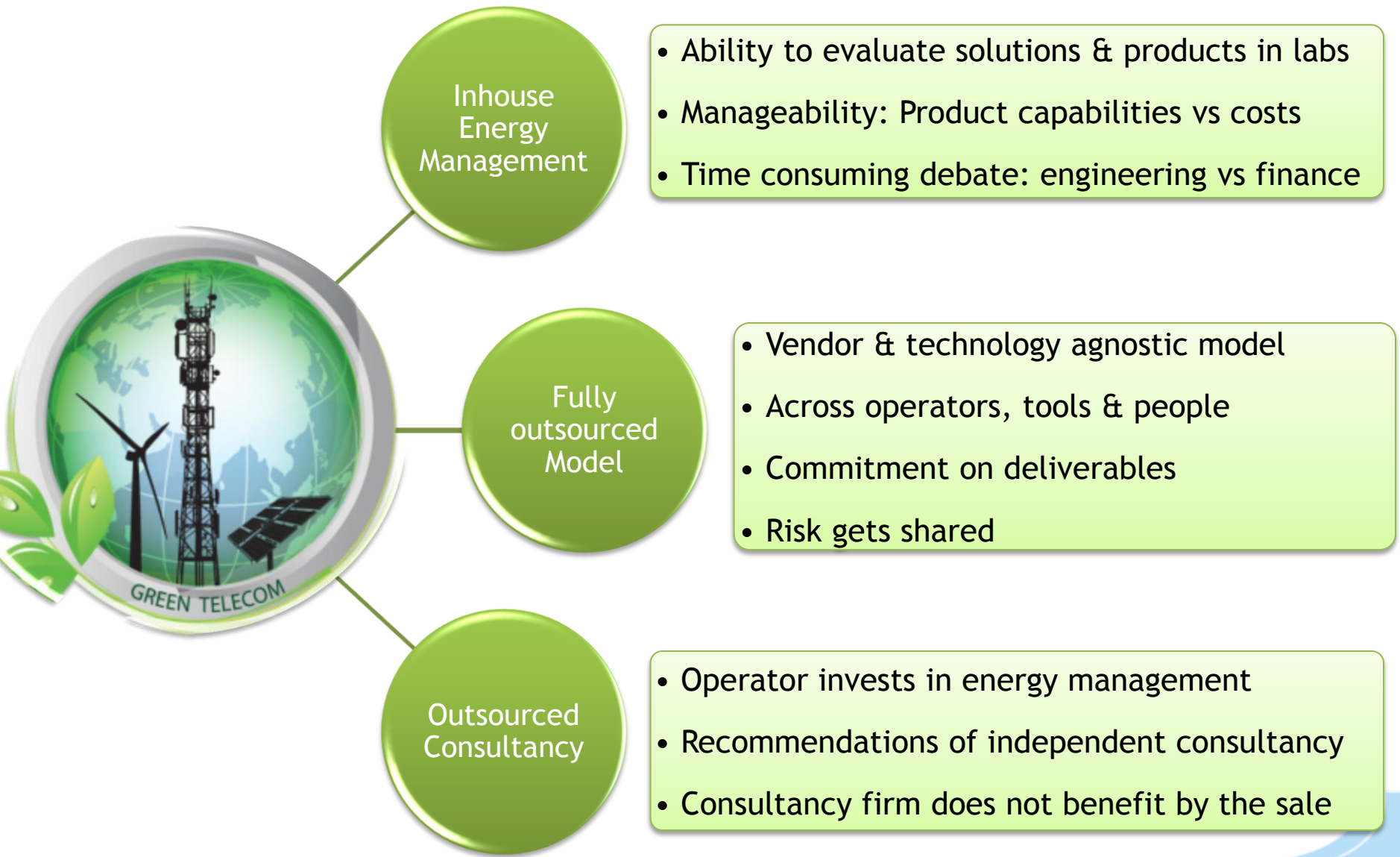
## *Scalable & support growth while ensuring savings*

- New fast changing energy technologies -- Should be scalable
- Flexibility to incorporate newer equipments
- Evolve to meet regulatory requirements

## *You cannot manage what you cannot measure*

- Energy score card
- Fault detection diagnosis
- Remote Performance Management

# Strategies for energy management



# Engineering Solutions on Energy

